

Carol Benton Warezak, NCIDQ, IIDA, WBE

Phone: 706-394-2420 | Email: carol@drm-group.com | Skype: carol.warezak
81 Bristlecone Lane • Augusta, GA 30909



PROFESSIONAL EXPERIENCE

Design Resource Management Group, Inc.
1986 – Present

Title: Principal and Owner
Primary Responsibilities

Provide space planning and interior design services for a broad range of commercial projects (see attached)

Manage construction and purchasing budgets

Meet with key personnel to ascertain space requirements, function and flow

Generate conceptual drawings / preliminary layouts and review with client

Meet with building inspector to ensure space project adheres to local and regional codes

Generate CAD drawings, including demolition plan, electrical plan, reflected ceiling plan, etc.

Meet with engineer and electrician to coordinate drawings and ensure design continuity

Oversee project management to ensure that construction meets design requirements

Coordinate government contracts with qualified vendors

Meet with furniture sales reps and maintain extensive resource library of commercial furniture, floor and wall coverings, equipment, etc.

Oversee office staff consisting of draftsmen, designers, bookkeeper and assistants

Maintain credentials through continuing education on best practices, ethics, standards, etc.

Augusta State University
1998-99

Title: Interim Campus Architect
Primary Responsibilities

Review and critique architectural drawings to ensure they meet campus-wide standards in terms of design and code

Meet with FF&E vendors, oversee resource library to ensure materials are up to date

Provide space planning and design services as needed.

Regularly meet with Facilities Manager and provide in depth reports on campus-wide infrastructure

EDUCATION

American College for the Applied Arts
Atlanta, GA 1980-84
Degree: Bachelors in Interior Design
Certified NCIDQ # 13716

REFERENCES

Therese Rosier, Director of Facilities
Kamehameha Schools, Hawaii
throsier@ksbe.edu

Sondra Smith, VP of Strategic Planning & Development
Doctor's Hospital, Augusta, GA
sondra.smith@hcahealthcare.com

Marvin Jackson, Pres. Jackson Aviation
Windermere, FL
g4jackson@gmail.com



The Council for Interior Design Qualification

formally acknowledges that

CAROL B. WARENZAK

has satisfied the eligibility requirements of the Council and

successfully passed the standard NCIDQ Examination

Given under our hands and seal of the Council this

12th day of ***April*** in the year ***1997***

D. Hansen

President

Karl Funtke

President-Elect

Certificate No. 13716

Project List

Infiniti of Augusta

Ferguson Automotive Group

Augusta, GA

Budget Review

Construction Contract Recommendations

Existing Furniture Inventory and Value Assessment

Selections, Purchase and Installation of FF&E

Church of the Most Holy Trinity

Augusta, GA

Budget Review and Recommendations

Existing Furniture Inventory and Value Assessment

Selections, Purchase and Installation of FF&E

HCA Health Care

Augusta, Albany, Evans Georgia

Design Layout and Concept, Space Planning,

Construction Drawings, Specification, Purchasing

and Installation of FF&E.

The Georgia Center for Facial Plastic Surgery (Dr. Achih Chen)

Space Planning / Design Concept / Finishes /

Construction Drawings / Purchasing

University Primary Care

(Charlie Green, M.D.)

Space Planning / Construction Documents /

Finishes and Purchasing

Trinity Hospital: Augusta Urology

Space Planning / Design Concept / Construction

Drawings; Finishes Specification and Purchasing

Doctor's Hospital

Augusta, GA

Space Planning / Design Concept / Construction

Drawings; Finishes Specification and Purchasing

Budget & Contract Review and Recommendations

- Emergency Services
- JMS Burn Center
- 2nd Floor Tower and Women's Center
- 3rd Floor CPU
- 5th Floor Patient Rooms
- 6th Floor Rehab Center

Georgia Center for Pelvic Health

Space Planning / Design Concept / Construction

Drawings; Finishes Specification and Purchasing

Augusta Cardiology

Space Planning / Design Concept / Construction

Drawings

University Medical Associates

Space Planning / Design Layout / Finish Schedules /

Selections and Purchasing

DASCO: Augusta Medical Plaza

Complete re-design of lobby area, including

corridors on two levels above. Preliminary Concept

/ Construction Drawings / Design Layout / Finish

Schedules / Bid Negotiation / Purchasing &

Installation of new Lobby Furniture. New Carpet,

LVT, Accent Walls, Etc.

Project List

Augusta Internal Medicine (Kerry Diver, M.D.)

Space Planning / Design Layout / Finish Schedules /
Selections

Out-Patient Imaging Center

Space Planning / Design Concept / Finishes /
Construction Drawings / Purchasing

Fort Gordon Battle Laboratory

Selection, Purchasing and Installation of Furniture
and Finishes

Pediatric Partners of Augusta Covenant Pediatrics (Dr. Allen Getts)

Space Planning / Design Layout / Finish Schedules /
Selections and Purchasing

- Peach Orchard Road Location
- Wrens, GA Location
- University Professional Center

Queensborough National Bank

Selection, Purchasing and Installation of Furniture
and Finishes

- Columbia Road Branch
- Mortgage Department
- Tobacco Road Branch
- Washington Road Branch
- Fury's Ferry Road Branch
- Belair Road Branch

Medical College of Georgia

Space Planning / Design Layout / Finish Schedules /
Selections and Purchasing

- Ambulatory Care Center
- Surgery Library
- Annex Building Lobby
- ENT Faculty Offices
- Orthopedics Faculty Offices
- Plastic Surgery Faculty Offices
- Anesthesiology Faculty Offices
- "Little Store" Gift Shop
- 4th Floor Nursing Station
- 4 South Ancillary
- 2nd Floor Waiting Rooms
- 3rd Floor Waiting Room
- 4th Floor Waiting Room

Beulah Grove Baptist Church

Finishes Specification & Purchasing

Ingenium Consulting

Selection, Purchasing and Installation of Furniture
and Finishes

Toole Engineers

Selection, Purchasing and Installation of Furniture
and Finishes

Cardiovascular Associates of Augusta

Space Planning / Design Concept / Finishes /
Construction Drawings and Contract Documents

John Carr, M.D., Family Medicine

Preliminary Layouts / Space Planning /
Construction Drawings

Project List

Goldsmith, Byars, Waxman & Bridges

Space Planning / Design Layout / Finish Schedules /
Selections

Aiken / Augusta Oral and Facial Surgery

Selection, Purchase and Installation of Furniture
and Finishes

Richmond County Department of Health (Frank Rumph, M.D.)

Space Planning / Design Concept / Finishes /
Construction Drawings

Lenox Optical (Lens Crafters)

Total Design Concept: Layouts, Construction
Drawings

- 13 locations through the Southeast

Comprehensive Psychiatric Services

Space Planning / Design Concept / Construction
Drawings

Surrywoods Professional Building

Space Planning / Design Concept / Finishes /
Construction Drawings

Doctor's Hospital

Space Planning / Design Concept / Construction
Drawings / Tenant Space Planning / Stacking
Diagrams

University Health Link

Space Planning / Design Concept / Finishes /
Construction Drawings

Augusta Urological Associates

Space Planning / Design Concept / Finishes /
Construction Drawings

Augusta Riverfront Center

Space Planning / Design Concept / Construction
Drawings / Tenant Space Planning / Stacking
Diagrams

Saint Mary on the Hill Catholic Church

Selection, Purchase and Installation of Furniture
and Finishes

Augusta Corporate Center

Space Planning / Design Concept / Construction
Drawings / Tenant Space Planning / Stacking
Diagrams

St. Teresa of Avila Catholic Church

Selection, Purchase and Installation of Furniture
and Finishes

South Trust Bank Corporate Offices

Georgia Bank and Trust Company

- Wheeler Road Campus
- Cotton Exchange Branch
- Human Resources Division

Colonial Plaza Shopping Center

Shopping Center Design / Exterior Signage

Richmond County Elementary School

Selection of Finishes

Project List

Augusta National Golf Club

Space Planning and Design Layout / Finish
Schedules and Purchasing

Columbia County Elementary School

Selection of Finishes

The Atrium Building

Space Planning / Design Concept / Construction
Drawings / Tenant Space Planning / Stacking
Diagrams

Trans Fleet Enterprises

Space Planning / Design Concept / Construction
Drawings / Selection and Purchase of Furniture
and Finishes

Northwestern Mutual Company

Space Planning / Design Concept / Construction
Drawings

Wheeler Securities

Space Planning / Design Concept / Finishes /
Construction Drawings

DSM Resins

Space Planning / Design Concept / Finishes /
Construction Drawings

The Church of the Good Shepherd

Selection, Purchase and Installation of Furniture
and Finishes

Our Lady of Peace Catholic Church

Selection, Purchase and Installation of Furniture
and Finishes

Southern Travel Agency

Space Planning / Design Concept / Finishes /
Construction Drawings

Friedman's Jewelers

Total Design Concept: Layouts, Construction
Drawings

- 23 locations throughout the southeast

Elliot Davis Technology Solutions

Space Planning / Design Concept / Finishes /
Construction Drawings / Purchasing and
Installation

- Augusta Location
- Columbia, SC Location

The Lamar Building

Space Planning / Design Concept / Construction
Drawings / Tenant Space Planning / Stacking
Diagrams

Carraway, Cohen, and Channel Insurance

Space Planning / Design Concept / Construction
Drawings

Augusta State University

Selection, Purchase and Installation of Furniture
and Finishes

- Physical Plant
- Christenberry Golf Clubhouse

Cellular One

Space Planning / Design Concept / Finishes /
Construction Drawings / Purchasing and
Installation

Project List

Devaughn, Dykes, and Leonard Insurance

Space Planning / Design Concept / Finishes /
Construction Drawings

Heavener Construction Company

Space Planning / Design Concept / Finishes /
Construction Drawings

Elements Salon

Space Planning / Design Concept / Construction
Drawings / Display Design

The Family YMCA

- Main Branch (Wheeler Road)
- Grovetown
- Marshall Square
- Augusta, GA
- Board Room
- Thomson, GA

Dot Holland, Inc.

Space Planning / Design Concept / Finishes /
Construction Drawings / Purchasing and
Installation

Mark Allison Associates

Space Planning / Design Concept / Finishes /
Construction Drawings / Purchasing and
Installation

Hargrove Properties

Space Planning / Design Concept / Construction
Drawings

The Sanctuary Church

Selection, Purchase and Installation of Finishes

Augusta Child Advocacy Center

Space Planning / Design Concept / Finishes /
Construction

Aiken Home Builders

Selection, Purchasing and Installation of Furniture

Office of Senator Coverdale

Space Planning / Design Concept / Finishes /
Construction Drawings

Abilene Baptist Church

Selection, purchasing and installation of furniture
and furnishings



Portfolio of Selected Projects



INFINITI

Infiniti of Augusta

Approved Furniture Specifications



DRM GROUP

Design Resource Management Group

Space Planning • Interior Architecture • Design Consultants

NCIDQ
NATIONAL COUNCIL FOR
INTERIOR DESIGN QUALIFICATION

IIDA
INTERNATIONAL
INTERIOR DESIGN
ASSOCIATION



Carol B. Warezak, NCIDQ, IIDA, WBE (Principal)

P.O. Box 14843 • Augusta, GA • 30919 • www.drm-group.com

Infiniti of Augusta Approved Items

FN-1: Lounge Seating
Location: Lounge Area



krug

Upholstery

Maharam: Lariat Taupe



Infiniti of Augusta Approved Items

FN-2: Lounge Seating
Location: Lounge Area



krug

Upholstery

Maharam: Lariat Taupe



Infiniti of Augusta Approved Items

FN-3 / FN-4: Coffee Table / End Table
Location: Lounge Area



Finish: Walnut with Chrome



Infiniti of Augusta Approved Items

FN-5: Executive Seating
Location: Sales Office



STYLEX

Upholstered Back and Arms
Polished Alumium Base

Upholstery
Maharam: Lariat Taupe



Infiniti of Augusta Approved Items

FN-6: Side Chair

Location: Sales Office



STYLEX

Polished Aluminum with Upholstered Arm Caps

Upholstery

Maharam: Lariat Taupe



Infiniti of Augusta Approved Items

FN-7: Executive Desk with 1-1/2" Enhanced Top
Location: Sales Office



PAOLI™

Kindle: Executive Desk

Finish: Walnut



Infiniti of Augusta Approved Items

FN-8: Cafe Chair

Location: Service Lounge



coalesse™

Enea Lotus

Cafe Chair

Brown Plastic Shell and Platinum Silver Base

Note: Not available in polished chrome

Infiniti of Augusta Approved Items

FN-9: Cafe Table

Location: Service Lounge



coalesse™

Enea Lotus

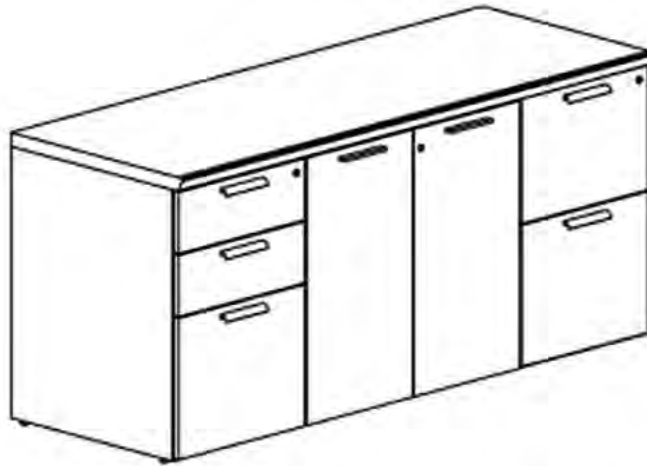
30" Cafe Table

With Laminate Top and Platinum Silver Base

Note: Not available in polished chrome

Infiniti of Augusta Approved Items

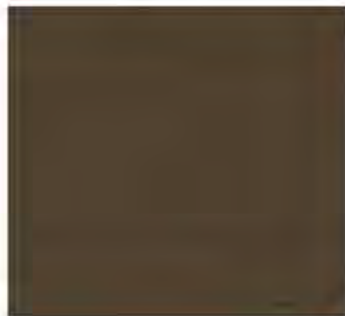
FN-11: Closed Credenza with 1-1/2" Enhanced Top
Location: Sales Office



PAOLI™

Kindle Closed Credenza

Finish: Walnut with Polished Aluminum Hardware





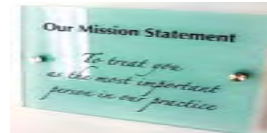
Augusta Medical Plaza Common Area Renovations



WALL SCONCE



FROSTED GLASS FILM



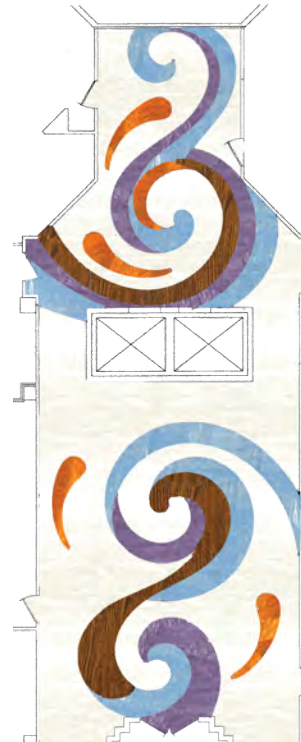
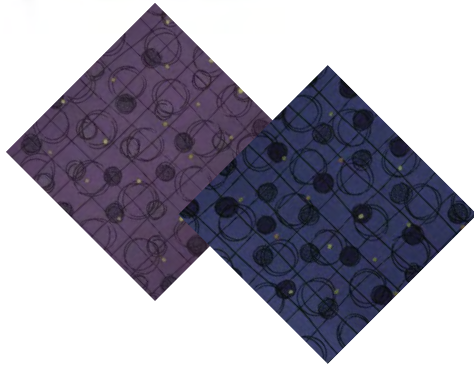
FROSTED GLASS SIGNAGE



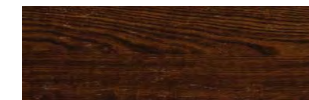
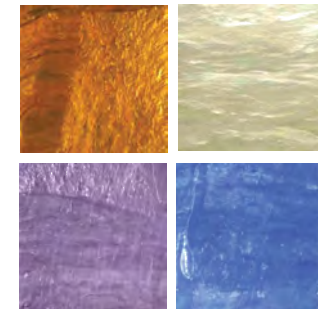
CORRIDOR CARPET



GUEST FURNITURE



LUXURY VINYL TILE PATTERN



LUXURY VINYL TILE



3624 J. DEWEY GRAY CIRCLE
SUITE 205
AUGUSTA, GA 30909
TEL: 706-651-1122

DASCOTM

MEDICAL OFFICE BUILDING TWO
PRELIMINARY ONE

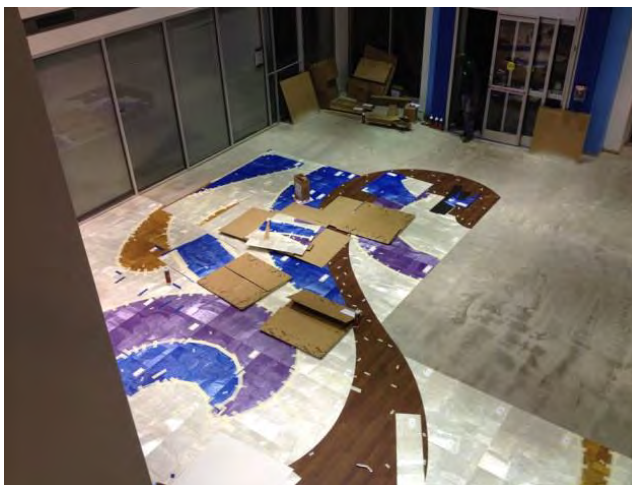
Interior Planning &
Design Consultants
DIRM GROUP
People. Passion. Management. Design.

DATE: 05-04-12
REVISIONS:

THESE DRAWINGS ARE THE PROPERTY
OF THE DESIGN RESOURCE
MANAGEMENT GROUP AND MAY NOT
BE USED IN WHOLE
OR IN PART WITHOUT THE WRITTEN
CONSENT AND ANY REPRODUCTION WILL
BE SUBJECT TO LEGAL ACTION.

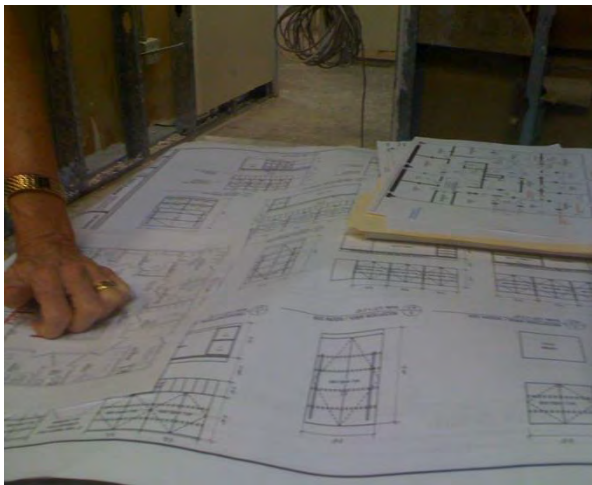
SHEET

Before and After



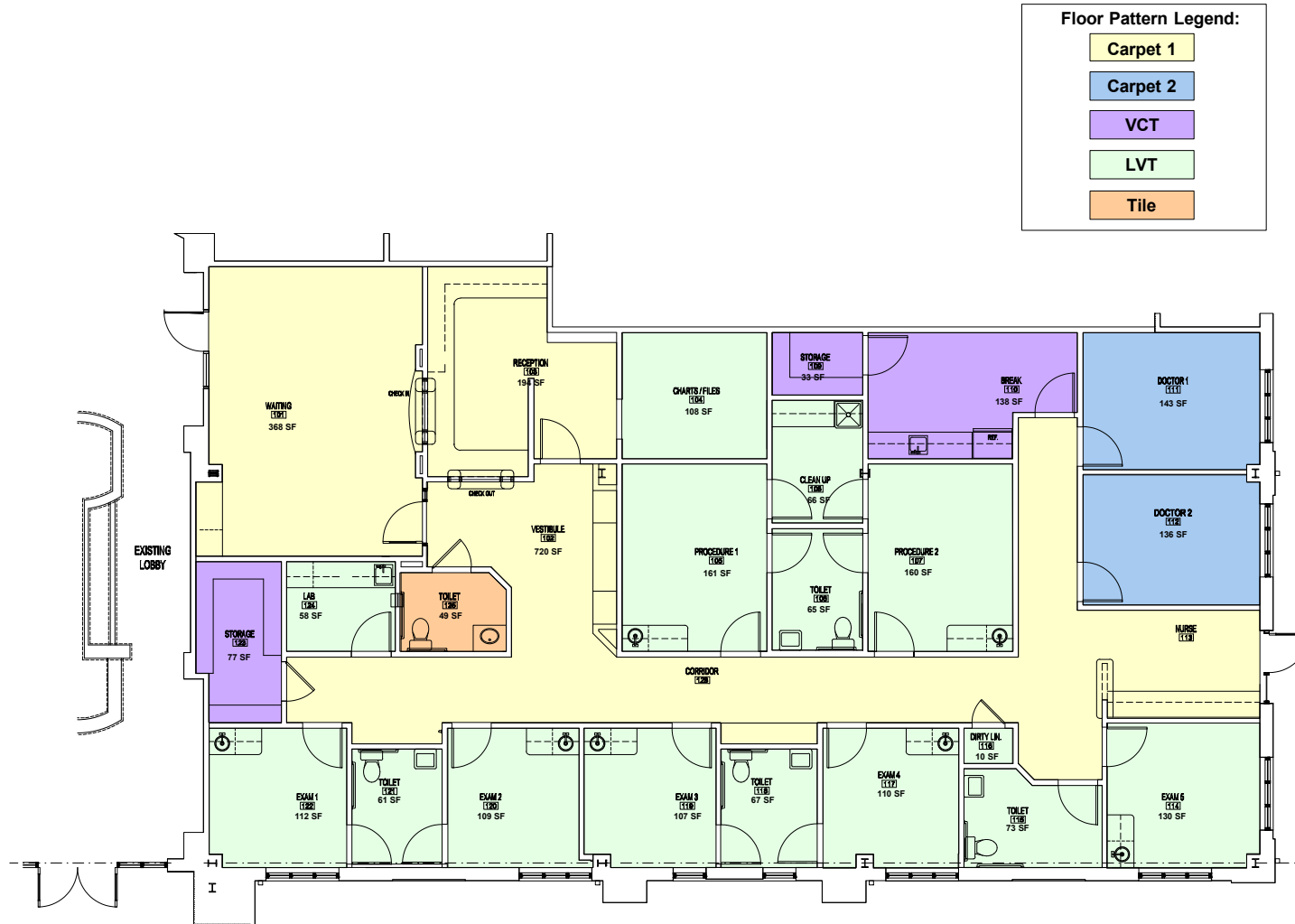
**Augusta Medical Plaza:
Common Area Renovations**

In the Field . . .





Evans Town Center Space Planning, Finishes, and Budgets



Floor Pattern Legend:

Carpet 1

Carpet 2

VCT

LVT

Tile

Evans Town Park: MOB Suite A
Scale: 1/4" = 1'-0"

Blanchard & Calhoun Commercial
2743 Perimeter Parkway
Building 100, Suite 370
Augusta, GA 30909

**BLANCHARD
AND
CALHOUN**

Evans Town Park
Medical Office Building
Suite A

Interior Planning & Design Consultants
DRM GROUP
Design Resource Management Group, Inc.
PO BOX 14443 • AUGUSTA, GA 30919

DATE: 11-15-11
REVISION:
20-05-11

THESE DRAWINGS ARE THE PROPERTY
OF THE DESIGN RESOURCE
MANAGEMENT GROUP AND MAY NOT
BE USED IN WHOLE
OR IN PART WITHOUT THE WRITTEN
CONSENT AND ANY VIOLATION WILL
BE SUBJECT TO LEGAL ACTION.

SHEET



Floor Pattern Legend:

- Carpet 1
- Carpet 2
- VCT
- LVT
- LVT-2
- Tile



Evans Town Park: MOB Suite D

Scale: 3/16" = 1'-0"

Blanchard & Calhoun Commercial
2743 Perimeter Parkway
Building 100, Suite 70
Augusta, GA 30909

BLANCHARD
AND
CALHOUN

Evans Town Park
Medical Office Building
Suite D

DRM GROUP
Interior Planning & Design Consultants
Design Resource Management Group, Inc.
PO BOX 14493 • AUGUSTA, GA 30919

DATE: 11-10-11
REVISION:
JLS/SL

THESE DRAWINGS ARE THE PROPERTY
OF THE DESIGN RESOURCE
MANAGEMENT GROUP AND MAY NOT
BE USED IN WHOLE
OR IN PART WITHOUT THE WRITTEN
CONSENT AND ANY VIOLATION WILL
BE SUBJECT TO LEGAL ACTION.

SHEET



Letters of Recommendation

September 16, 2003

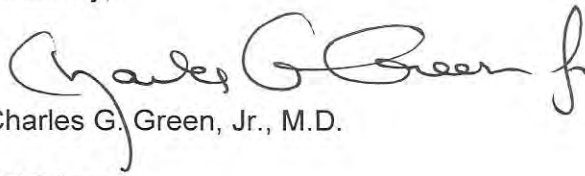
Re: Carol B. Warezak, NCIDQ

To Whom It May Concern:

It has been a real pleasure to work with Carol Warezak in the planning, design, and implementation of our new office facility. She did an outstanding job and provided us with an ideal office. Her ideas and recommendations have allowed us to increase our patient visits by approximately 50%. In addition, patients and staff have been delighted with the decor that she selected.

She provided us with an A to Z implementation and minimized our planning time which allowed us to continue our focus on the practice of medicine. I offer nothing but the highest recommendation for her services and I certainly highly recommend her to others.

Sincerely,



Charles G. Green, Jr., M.D.

CGG/pas

AUGUSTA MEDICAL ASSOCIATES

KERRY C. DIVER, M.D.

INTERNAL MEDICINE

JOHN P. HANCOCK, M.D.

M.D.
INTERNAL MEDICINE

MICHAEL L. WILLOUGHBY,

INTERNAL MEDICINE

March 15, 2007

Mrs. Carol B. Warezak, NCIDQ
P.O. Box 14843
Augusta, GA 30919

To Whom It May Concern:

I am writing in reference to The Design Resource Management Group. We had the opportunity for them to design our recent office space on campus at University Hospital in Augusta, GA. The budget for renovations and refurbishment was small and time constraints were severe. However, Mrs. Warezak came up with an excellent design plan that resulted in minimal modifications of existing office. The choices in wallpaper, carpeting, paint, and furniture was excellent.

We are extremely pleased with our results. The office flow is excellent. I receive multiple complements daily on the office décor.

For anyone looking for office design including interior design, I would recommend Mrs. Warezak, highly.

Sincerely,



KERRY C. DIVER, M.D.

KCD/bs/139192



The Church of the Most Holy Trinity

Post Office Box 2446
Augusta, Georgia 30903-2446
www.themostholytrinity.org

December 4, 2005

As pastor of The Church of The Most Holy Trinity, I am grateful to Mr. and Mrs. Warezak for providing their services to our growing faith community. Through their companies we were able to furnish our new parish administration offices located in the Baird building and our Parish Center in St. Francis Hall. Their ability to carry the project to completion under difficult time and budget constraints was truly impressive.

Sincerely in Christ,

Father Allan J. McDonald,

Pastor